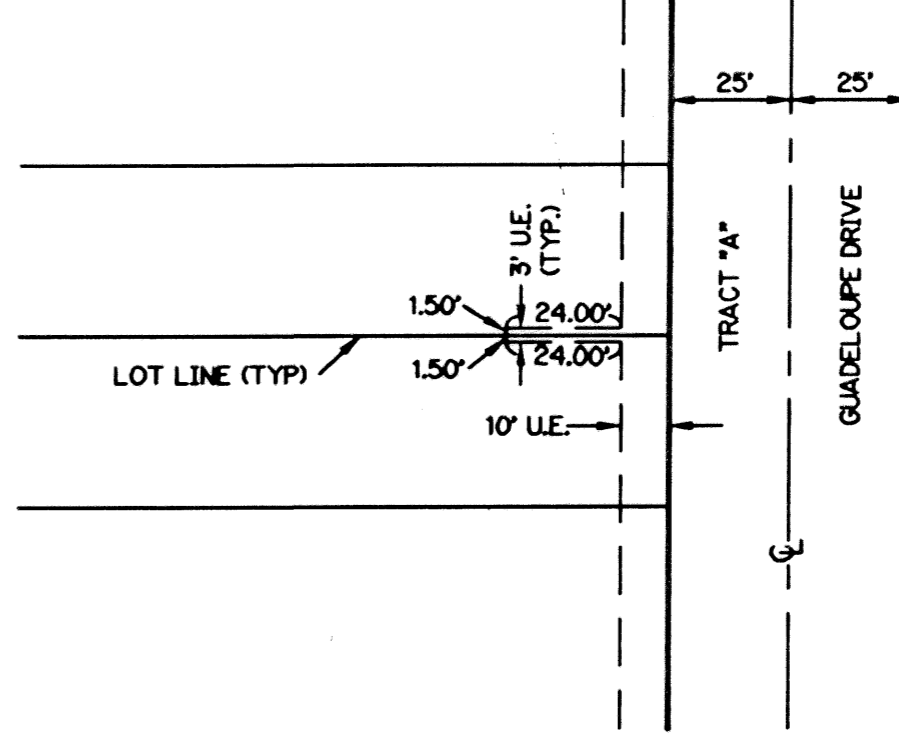
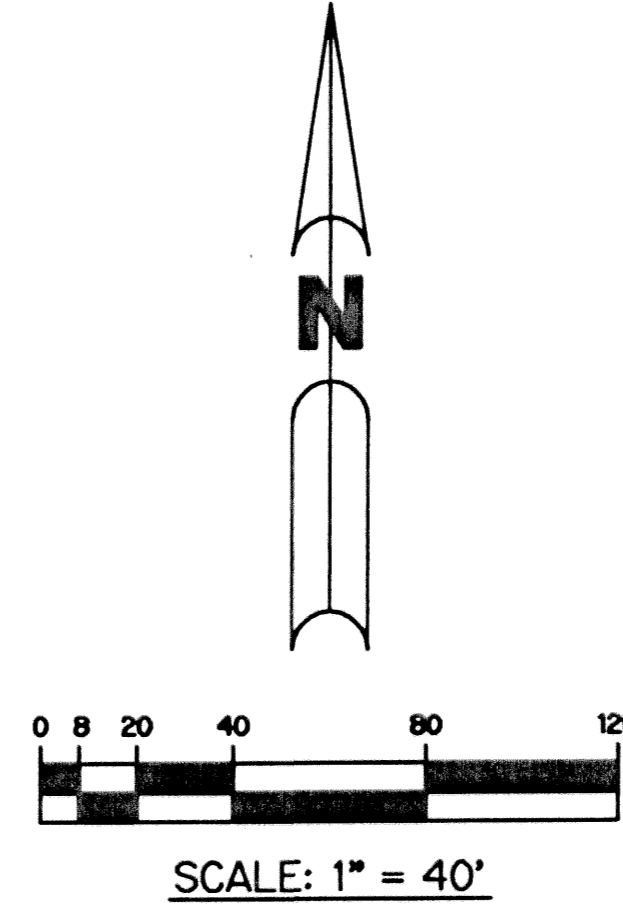
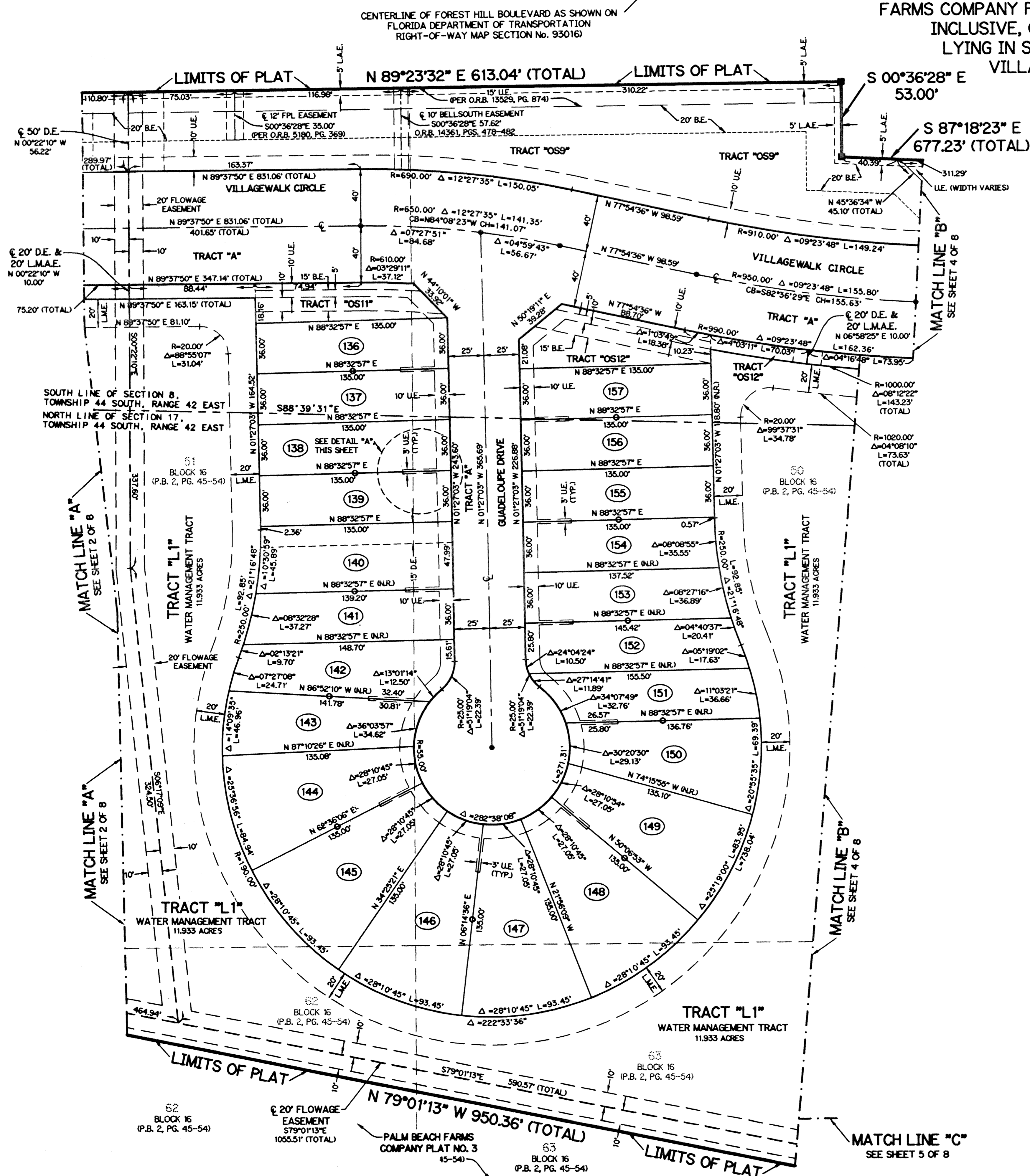


VILLAGEWALK OF WELLINGTON - PLAT TWO

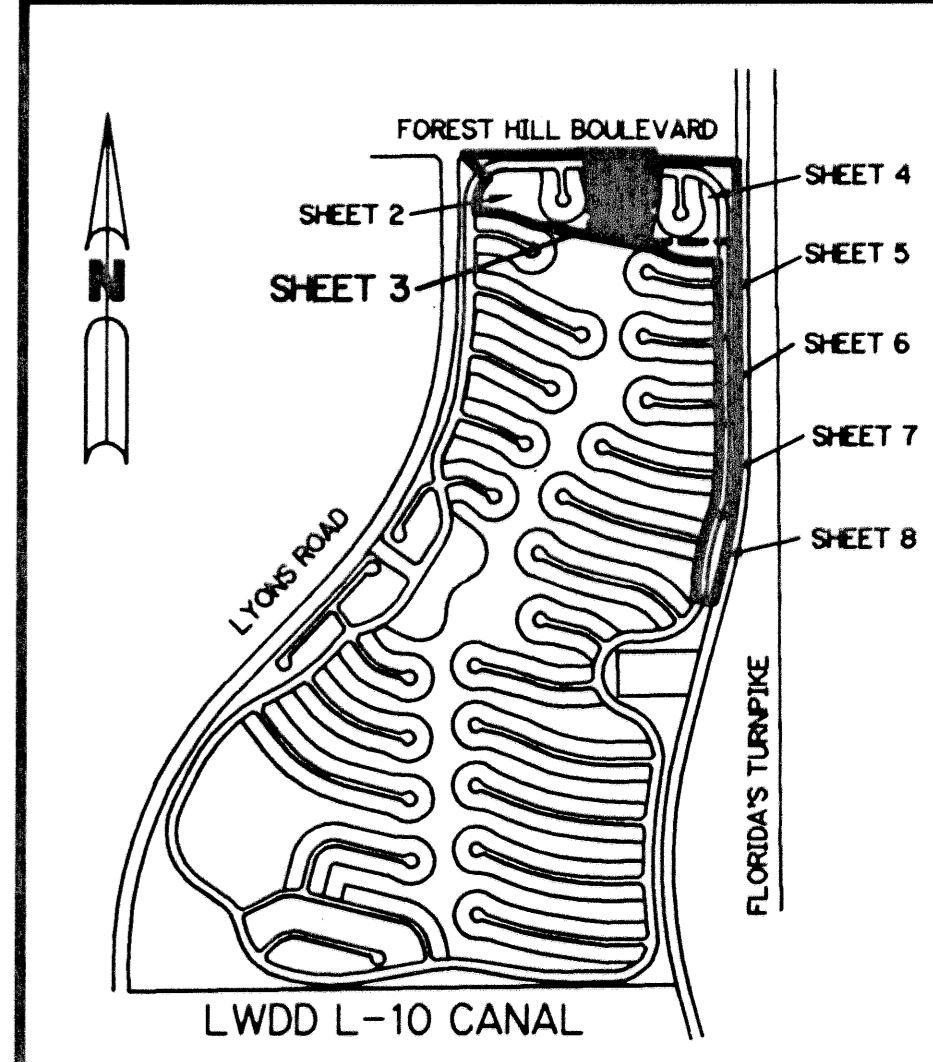
BEING A REPLAT OF A PORTION OF TRACTS 49, 50, 51, 52, 62, 63 AND 64, BLOCK 16, AND TRACTS 1, 16, 17, 18, 31 AND 32, BLOCK 20, ACCORDING TO THE PLAT OF PALM BEACH FARMS COMPANY PLAT NO. 3 AS RECORDED IN PLAT BOOK 2, PAGES 45 THROUGH 54, INCLUSIVE, OF THE PUBLIC RECORDS OF PALM BEACH COUNTY, FLORIDA. LYING IN SECTIONS 8 AND 17, TOWNSHIP 44 SOUTH, RANGE 42 EAST. VILLAGE OF WELLINGTON, PALM BEACH COUNTY, FLORIDA

SHEET 3 OF 8 JANUARY, 2003



- LEGEND:**
- - PERMANENT REFERENCE MONUMENT, LB #6674
 - - PERMANENT CONTROL POINT, LB #6674
 - Δ - DELTA ANGLE
 - ⊕ - CENTERLINE
 - BE - BUFFER EASEMENT
 - CB - CHORD BEARING
 - CH - CHORD LENGTH
 - DB - DEED BOOK
 - DE - DRAINAGE EASEMENT
 - FPL - FLORIDA, POWER AND LIGHT
 - L - ARC LENGTH
 - L.A.E. - LIMITED ACCESS EASEMENT
 - L.M.A.E. - LAKE MAINTENANCE ACCESS EASEMENT
 - L.M.E. - LAKE MAINTENANCE EASEMENT
 - L.W.D.D. - LAKE WORTH DRAINAGE DISTRICT
 - NR - NOT RADIAL
 - N.T.S. - NOT TO SCALE
 - O.R.B. - OFFICIAL RECORD BOOK
 - P.B. - PLAT BOOK
 - PGS. - PAGES
 - P.O.B. - POINT OF BEGINNING
 - P.O.C. - POINT OF COMMENCEMENT
 - P.R.M. - PERMANENT REFERENCE MONUMENT
 - P.S.M. - PROFESSIONAL SURVEYOR AND MAPPER
 - R - RADIUS
 - RAD - RADIAL
 - R/W - RIGHT-OF-WAY
 - STA. - STATION
 - S.T. - SURVEY TIE
 - TYP. - TYPICAL
 - U.E. - UTILITY EASEMENT
 - V.E. - VILLAGEWALK EASEMENT
 - - INDICATES COMMON LOT LINE
 - - TRACT NUMBER (TYP.)
 - - PALM BEACH FARMS COMPANY PLAT NO. 3 P.B. 2, PGS. 45-54
 - ▲ - INDICATES ZERO SIDE FOR BUILDING
 - - INDICATES COMMON LOT LINE

THIS INSTRUMENT PREPARED BY
 DAVID L. SMITH, P.S.M. 4951, STATE OF FLORIDA
 LAWSON, NOBLE AND WEBB, INC., LB-6674
 ENGINEERS PLANNERS SURVEYORS
 420 COLUMBIA DRIVE, SUITE 110
 WEST PALM BEACH, FLORIDA



LOCATION & KEY MAP
 SEC. 8 & 17 TWP. 44 S RGE. 42 E